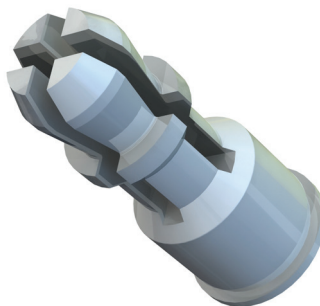
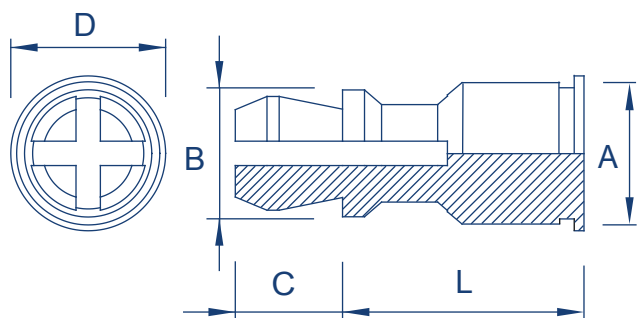


Clip-on Standoffs

TR-SSS/TR-SSC/TR-SSA



Zinc Plated Steel : TR-SSS | Stainless Steel : TR-SSC | Aluminium : TR-SSA



Metric Dimensions

Top panel mounting hole diameter	Length code 'L' mm ± 0.13									A max	B ± 0.13	C ± 0.13	D ± 0.13	Hole size $+0.08$
Metric 4mm	8	10	12	14	16	18	20	22	25	5.39	4.78	3.58	6.35	5.4

Metric Performance Data: TR-SSS / TR-SSC / TR-SSA

Type	Steel Zinc	Stainless Steel	Aluminium
Installation (kN)	15.6	16.5	6.7
Pushout (kN)	1785	1785	881
Test material	1.5mm Steel	1.5mm Steel	1mm Aluminium

Part number	Panel 1 - Metal HRB50					Panel 2 - PC board or metal			
	Bottom mounting hole $+0.08$	Hardness max.	Thickness min.	Edge distance min.	Location tolerance max.	Top mounting hole $+0.08$	Hardness max.	Thickness range	Edge distance min.
TR-SSS	5.41	HRB 60	1	6.6	± 0.13	4	No limit	1-1.8	2.54
TR-SSC		HRB 70							
TR-SSA		HRB 50							

These tests have been conducted in laboratory conditions, these figures should therefore be used for guidance only.

All data is correct to the best of our knowledge, however TR cannot be held responsible for any errors or omissions.